



keyassets

SERVING CHILDREN, FAMILIES & COMMUNITIES

# Virtually Real

Whakamanawa

17 September 2024



keyassets

SERVING CHILDREN, FAMILIES & COMMUNITIES

Cornerstone  
life changing VR innovation



# Why Virtual Reality?





“You never really understand a person until you consider things from his point of view

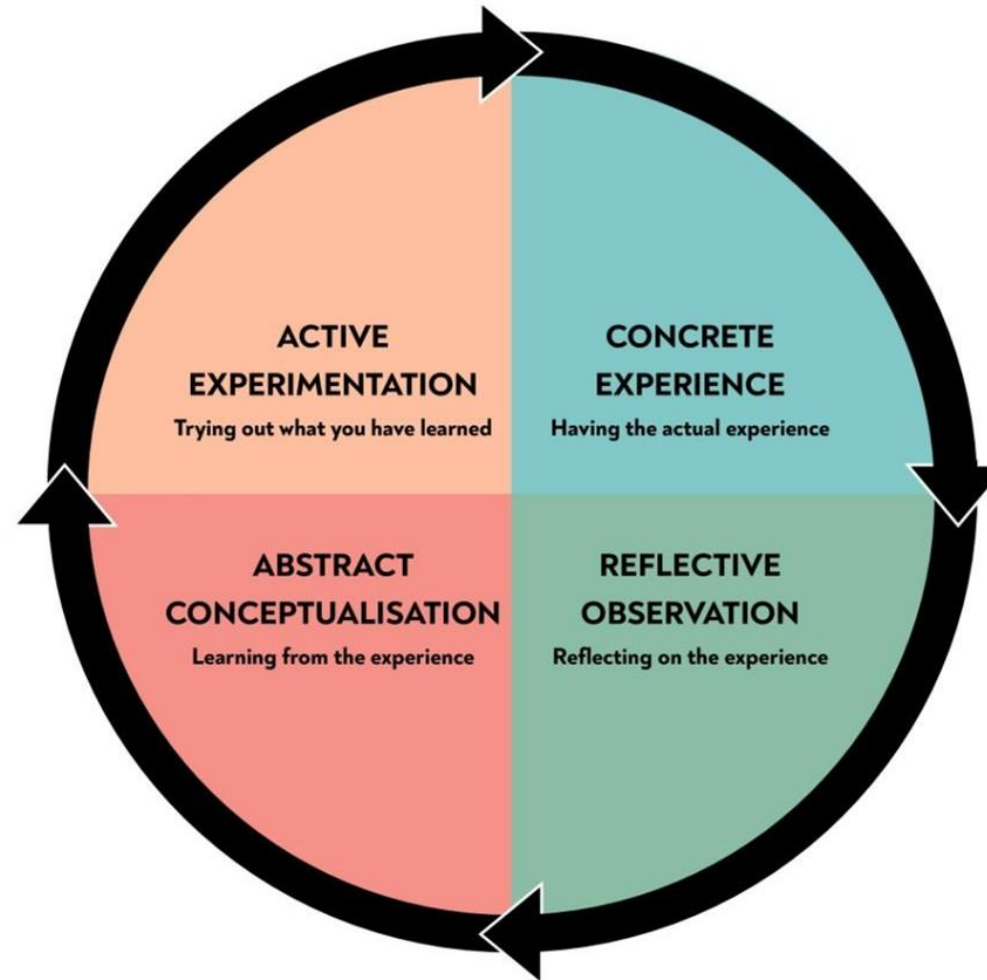
- until you climb into his skin and walk around in it.”

Harper Lee





# Integration of learning





# Compared to traditional learners, VR learners are:

- 4x more focused
- 4x faster learners
- 275% more confident

\*Source: PwC “Seeing Is believing” report, 2019

Caroline

Shalene

Louise

Matt

Karin

Rebekah

Monika

Teri

shar

Claire

Karen

Jordan

Helenne

lee

Callum



# Developing confidence

- Iti nei, iti nei
  - familiarity in small steps
- Train the trainer in house
- Short and focused deliveries
- Partnering with colleagues to deliver
- Ongoing relationship with Cornerstone
- Practice!



# Caring for participants





## Fostering and Adoption

2017

2018



## Early Life Trauma and PACE

2020

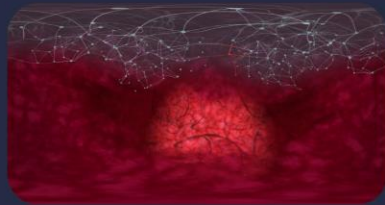


## Vulnerabilities in Adolescence

2021



## Exploitation



## Fetal Alcohol Spectrum Disorder Awareness

2023

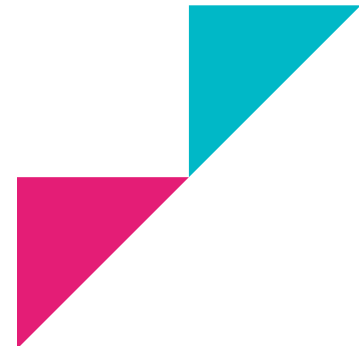


## Social Media and Digital Platforms

2024

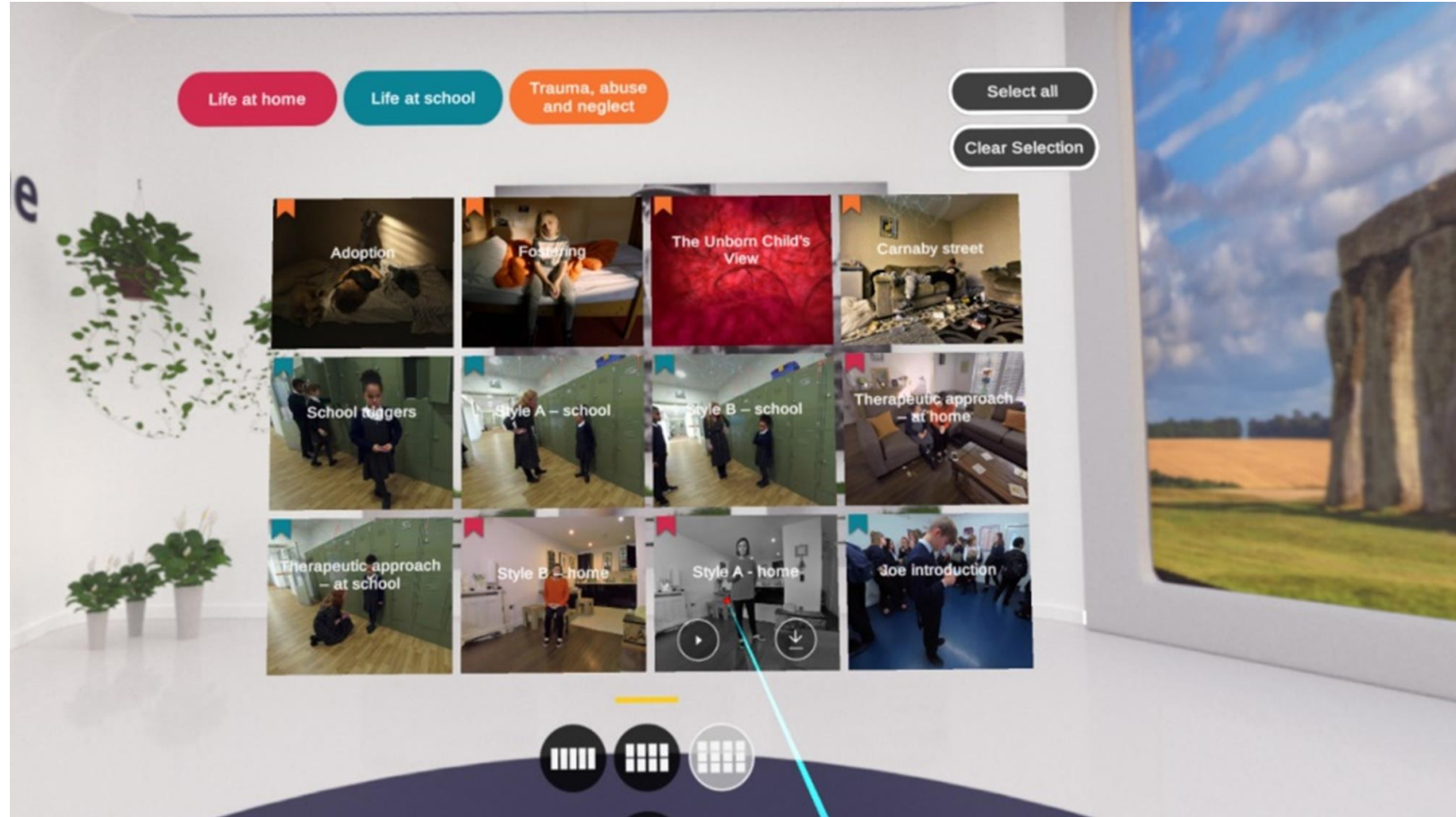


What does it look like?

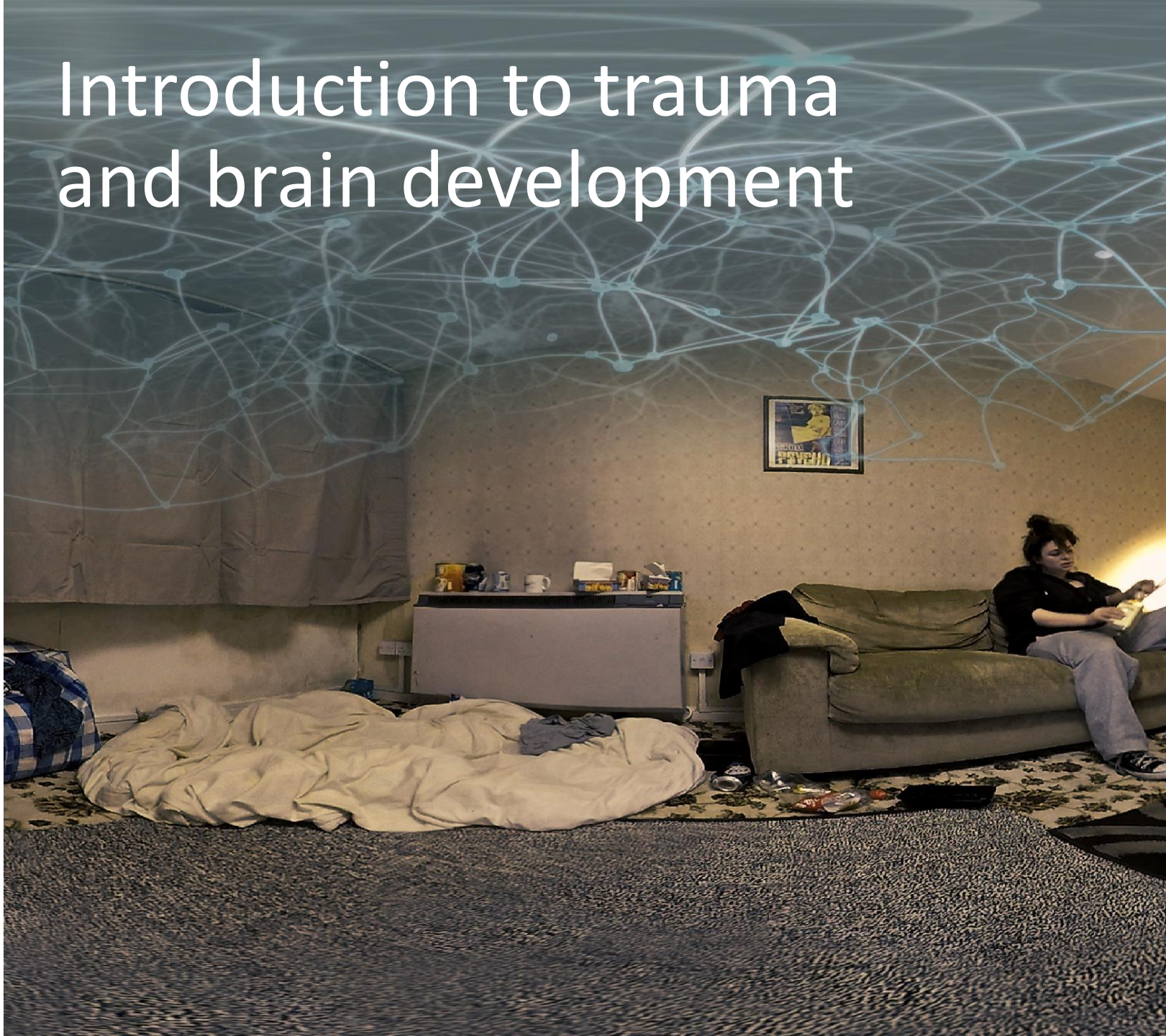




# What does it look like?



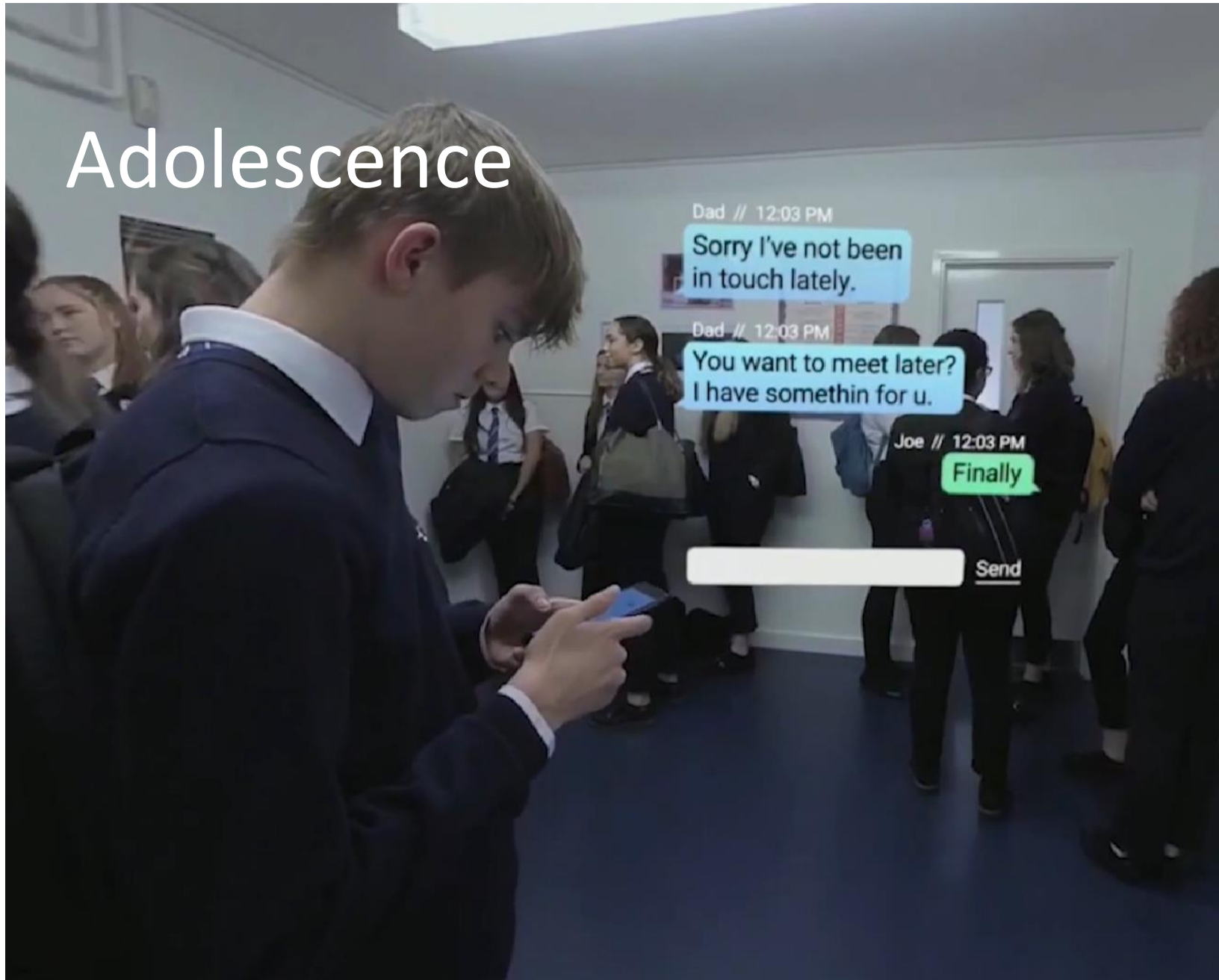
# Introduction to trauma and brain development



# Arriving in a new home



# Adolescence





# National Autistic Society







## VR utility

---

One on one sessions or groups

---

Caring support staff

---

School staff

---

Training social workers

---

Youth workers and mentors

# Feedback from participants



'It made us think a lot about how the child must feel and we were able to guide his carer to improve her approach'



"Watching the videos was a really good base to spring board from in terms of looking at how to support a young person entering our home for the first time".

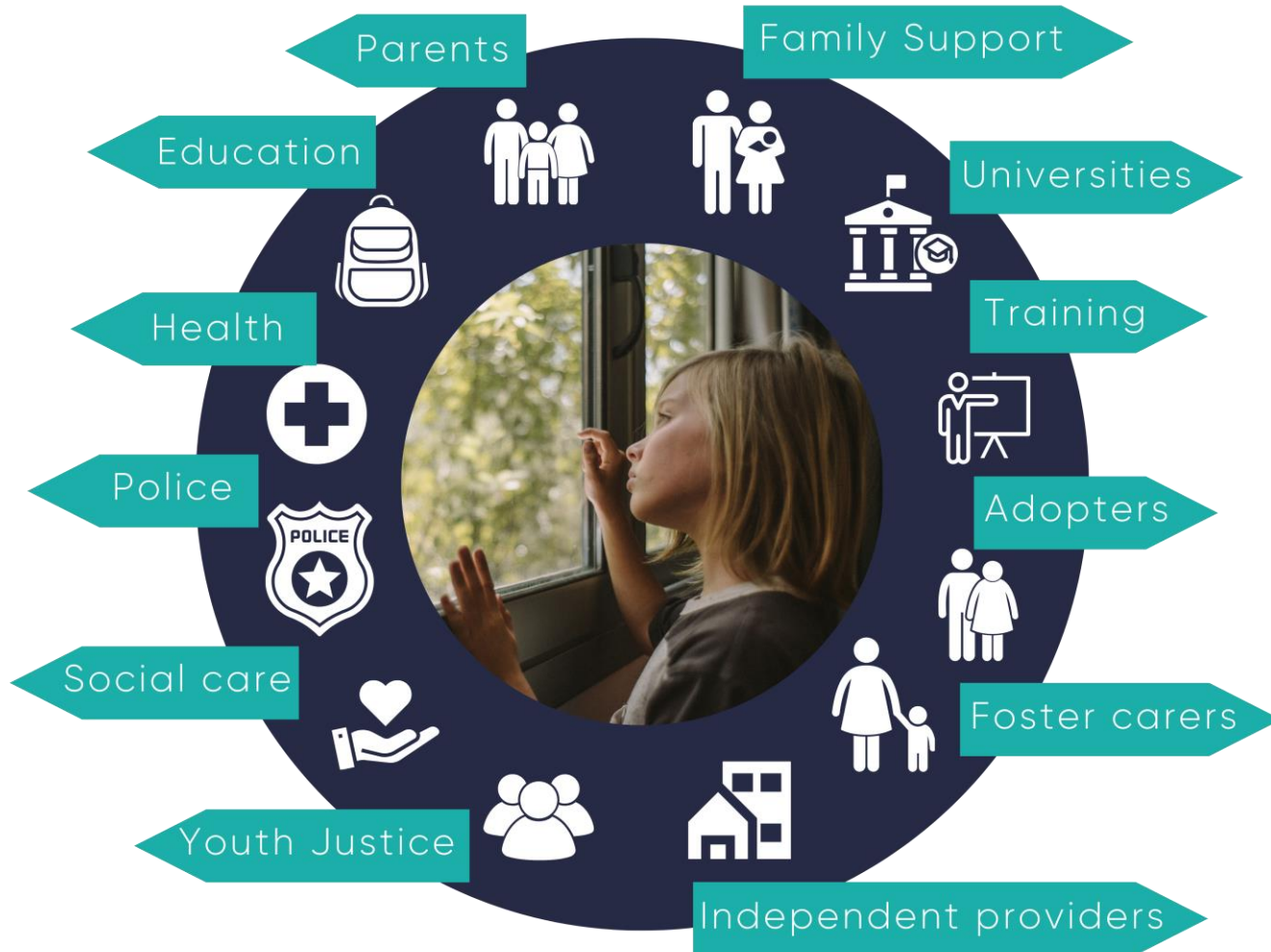


This has been so useful not only in thinking about 'John's' behaviour and why he might react and express himself the way he does but what might be behind the behaviour of other children in the class who we perceive as being difficult or challenging"

# Next steps

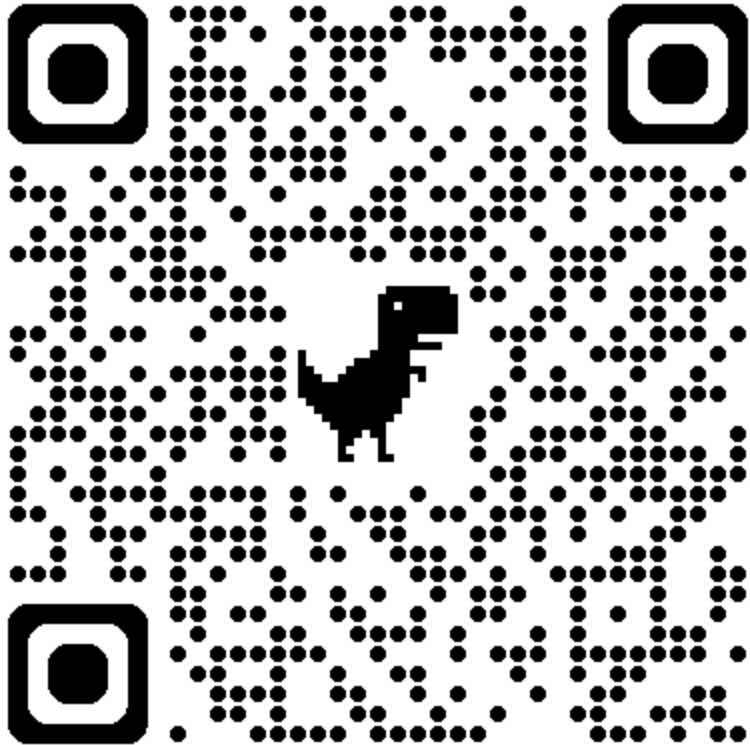


# Future prospects





# Contact details



09 263 5151

info@keyassets.co.nz



# THANK YOU!



