

SSPA Kai & Kōrero:
Care for Taiao in Social Services



Tuesday 12 November 2024
12-1pm

Kirsten Gendall
& Silvia Purdie

SSPA Kai & Kōrero:

Care for Taiao in Social Services



Karakia and welcome

Mihimihi – brief introductions

Manaaki for both people and planet – Silvia

Wesley Community Action's journey – Kirsten

Questions & discussion

Opening Karakia: Psalm 36:5-6

⁵Kei ngā rangi, e Ihowā, tāu mahi tohu;
tutuki noa atu tōu pono ki ngā kapua.

⁶Rite tonu tōu tika ki ngā maunga o te Atua;
he rire nui āu whakaritenga;

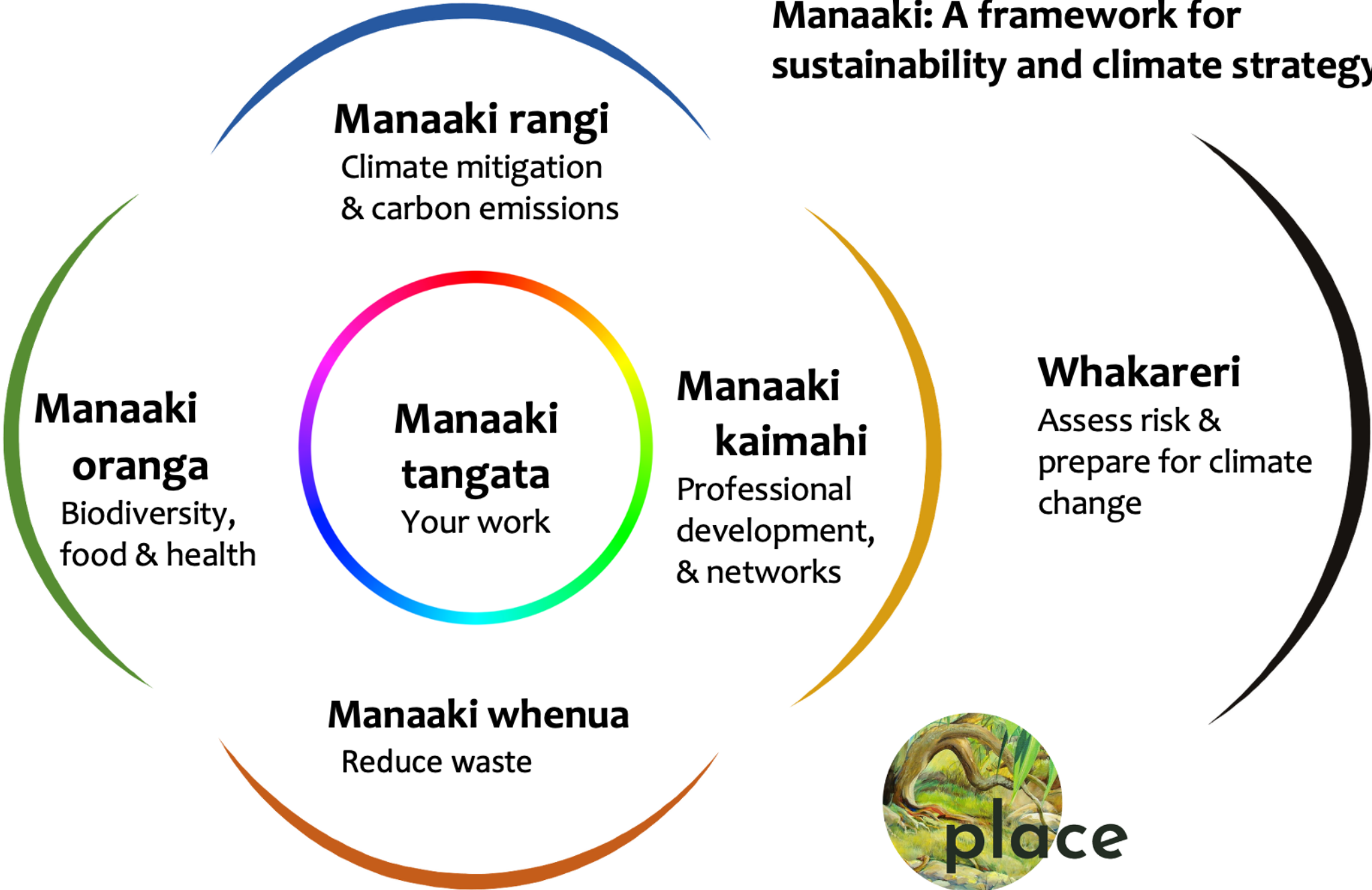
ko koe, e Ihowā, te kaiwhakaora i te tangata, i te kararehe.

Your steadfast love, O Lord, extends to the heavens,
your faithfulness to the clouds.

⁶Your righteousness is like the mighty mountains,
your judgements are like the great deep;
you save humans and animals alike, O Lord.



Manaaki: A framework for sustainability and climate strategy

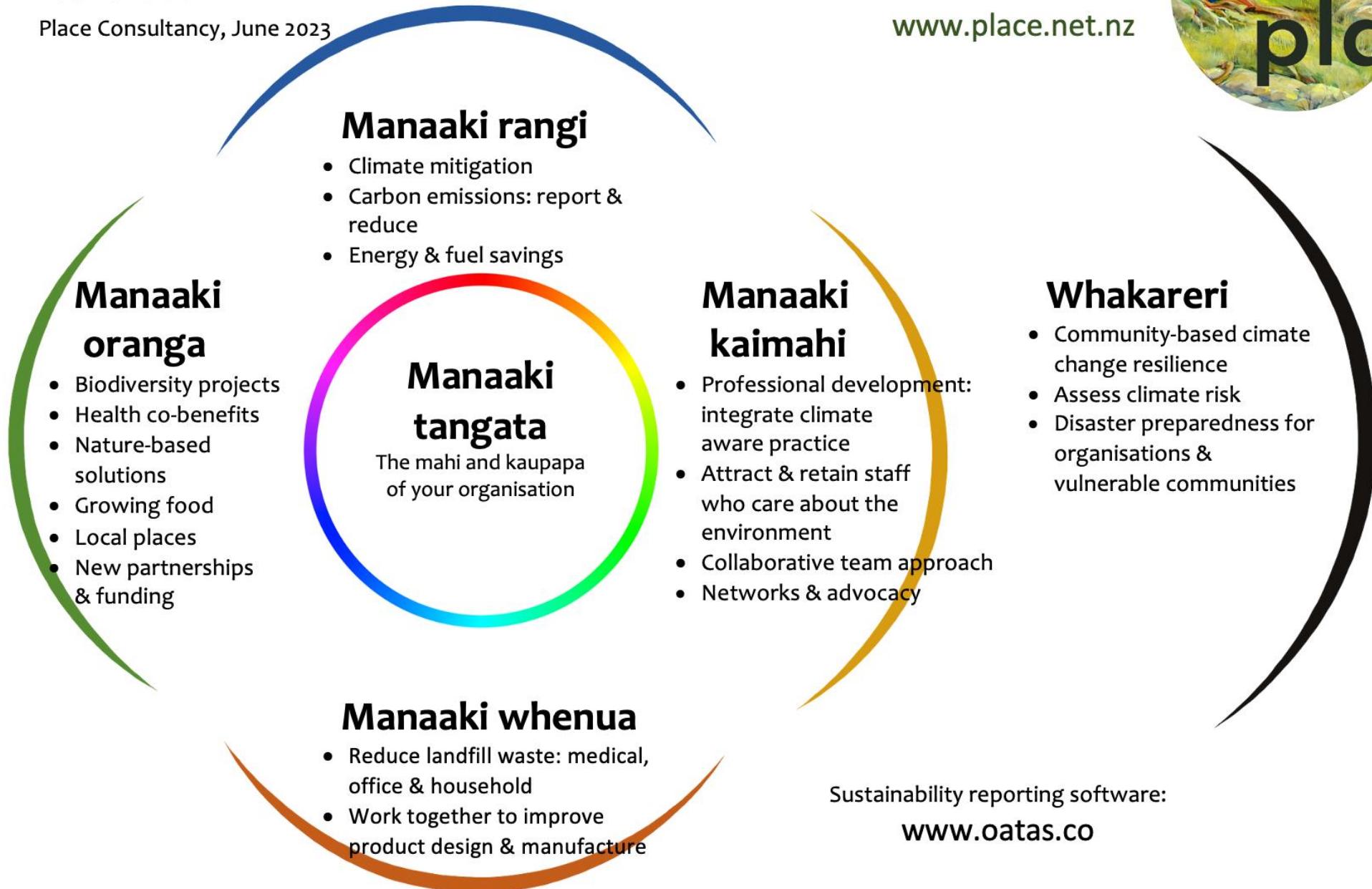


Manaaki: A framework for sustainability and climate strategy

Nā Silvia Purdie

Place Consultancy, June 2023

www.place.net.nz



Sustainability reporting software:

www.oatas.co

SSPA Kai & Kōrero:

Care for Taiao in Social Services

www.wesleyca.org.nz



**Wesley
Community
Action**



NGĀ PIHINGA / SIGNS OF HOPE

- The resilience, spirit and humour of whānau.
- The growing leadership and positive impact of iwi, hapū and Māori initiatives.
- Strengthening movements for radical environmental change, social justice and decolonisation.
- Increasing recognition of the strengths that come from diverse cultural traditions and lived experience.
- A growing recognition of the connections between a healthy natural environment, healthy hapori / whānau and a sustainable economy.
- The creative energy from local, community-led initiatives.
- Increasing recognition that the old ways of working are not fit for purpose, and we need to change the systems set up to 'help' people.

Five foundations for a good life

Our mahi spans five inter-related foundations for a good life:



Connected and supportive whānau



Financial stability



Good kai



Warm, safe and dry housing



A healthy natural environment



**Wesley
Community
Action**

Climate Change

Waste

Travel/transport

Electricity/energy

Purchasing and procurement

Kai sovereignty

Biodiversity and wāhi ataahua

Leadership and Influence and Professional Development.



Wesley
Community
Action



Wesley
Community
Action

Waste audit



Wesley
Community
Action

Solar panels at Cannons Creek



Wesley
Community
Action

Community composting



Wesley
Community
Action

Community composting



Wesley
Community
Action

Ngahere korowai



Wesley
Community
Action

Ngahere korowai



SSPA Kai & Kōrero:

Care for Taiao in Social Services

Closing Karakia

Today, and every day, may we know that we are enough.

Today, and every day, may we be held in peace
and sustained by grace.

In small actions of care, in meetings and strategy,
in times of rest and times of work,
may we know ourselves connected
to this beautiful earth and to one another,
in spirit and in truth.

Peace go with us and be with us. Amen.





SSPA Kai & Kōrero:
Care for Taiao in Social Services

Kirsten Gendall: kgendall@wesleyca.org.nz

Silvia Purdie: Silvia.Purdie@gmail.com

Place Consultancy: www.place.net.nz

Climate mental health network:
<https://www.conversationscounselling.nz/climate-network.html>