



Coromandel Independent Living Trust - CILT -

- Operating since 1994
- Over 15 projects across 9 sites
- Full wraparound support
- Funding mostly from government contracts.



Our New Building Te Putahi Whaiora- 'The Hub'



Two Social Workers two different perspectives



Community Gardens



Art Classes



Resale Shop

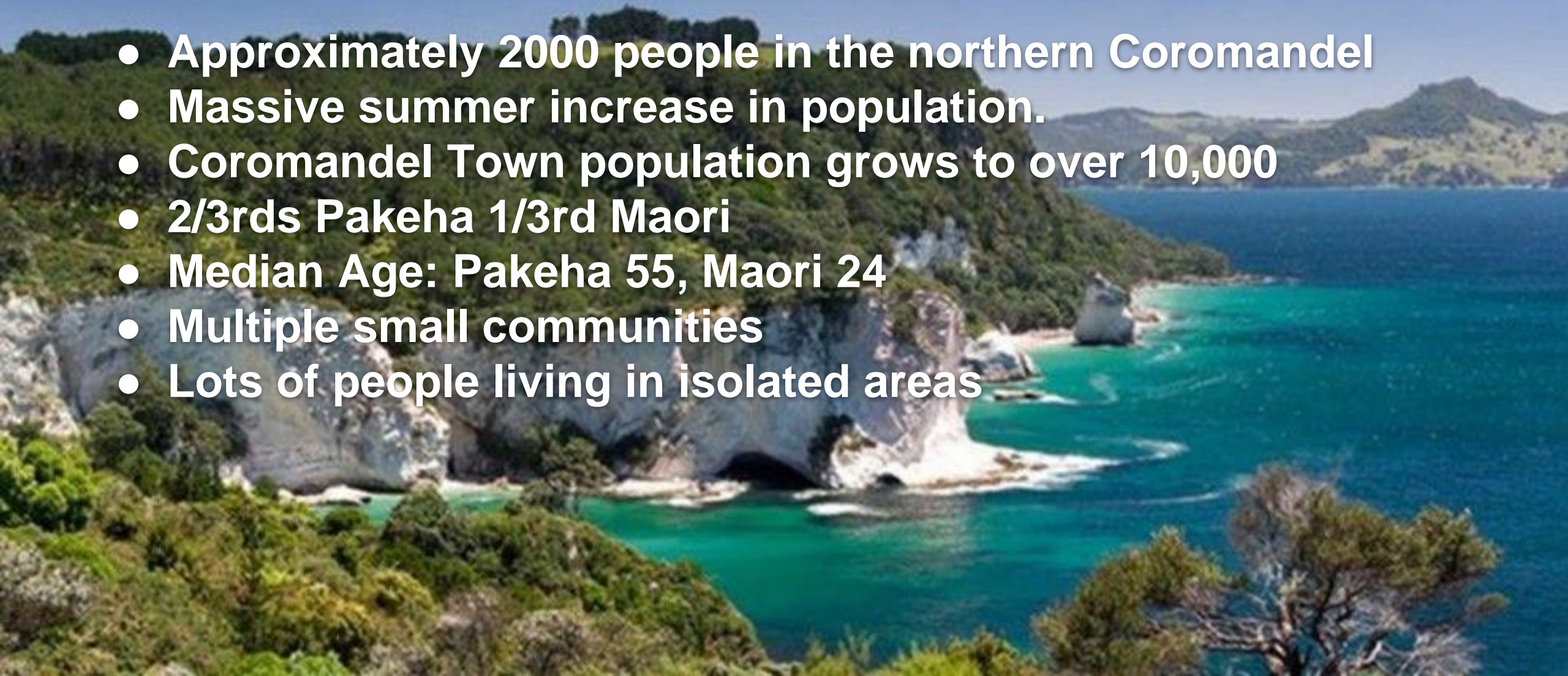


Native Plant Nursery



Our Area Demographics

- Approximately 2000 people in the northern Coromandel
- Massive summer increase in population.
- Coromandel Town population grows to over 10,000
- 2/3rds Pakeha 1/3rd Maori
- Median Age: Pakeha 55, Maori 24
- Multiple small communities
- Lots of people living in isolated areas




Referrals from



- Family and self referrals.
- Police Integrated safety response system (ISR) referrals from police incidents.
- Local Doctor.
- Probation
- Mental Health
- From the community

Issues Arising

A young girl with blonde pigtails is sitting at a table, looking down with a sad expression. In the background, a woman in a pink top and a man in a blue shirt are standing and talking. The scene is set in a kitchen or dining area.

- Accomodation
- Family violence
- Mental Health
- Addictions
- Court matters
- Income entitlements
- Budgeting
- Relationships
- Transport

Statistics

The Social Services Team supported 46 families over the last financial year.

These cases involved 132 Children

ISR responded to 76 incidents, these were referrals from Police.



Major Issues Faced in a rural area

- Rural Isolation
- Accommodation and state of housing
- Family parenting skills
- Drugs, alcoholism, mental health.
- Youth, transitioning from School to work
- Close community - everyone knows each other.



Recova
ALCOHOL & DRUGS
ANONYMOUS MEETING
Meet 6-7pm Thursdays
Orange House 50 Pound St Coro Town

Nau Mai
Haere Mai
Welcome

enquiries ph Liz 027 436 2800

The poster features a background image of a sunset over a beach. A stylized house with a blue roof and orange walls is positioned on the right side. The text is arranged in a clear, readable layout with varying font sizes and colors (white, blue, orange) to highlight key information.

Self Care – Social Workers Burnout



Tough Cases

We have some tough cases, these really shake up our Community, and can impact a lot of people.



Solutions


- Working with police, local doctors, and lawyers
- Working with other agencies. Oranga Tamariki.
- Referral to Te Korowai a youth worker. local, CAPS counselling.
- Budgeting support
- Working with the local school, youth groups.



Small Community Strengths

Being in a small community has its advantages. The interconnectedness of the community and our support groups can be really helpful



A man with a beard and sunglasses, wearing a patterned orange jacket and a red life vest, is smiling while holding a large, silvery fish. He is on a boat with another man in a grey jacket standing next to him. The background shows a blue sea, a green island, and a cloudy sky. The text "Success Stories." is overlaid in white on the image.

Success Stories.

Father & Son Fishing Trip



Matarangi Surfing Trip





Thank You

**CILT is all about
helping where we can
&
building a stronger
Community**