



Social Service  
Providers  
Aotearoa



SOCIAL SERVICE PROVIDERS AOTEAROA

# Annual Report

## 2016-2017



## SOCIAL SERVICE PROVIDERS AOTEAROA

120 Featherston Street Level 4  
PO Box 25 515  
Wellington 6011

[www.ssipa.org.nz](http://www.ssipa.org.nz)  
F SocialServiceProvidersAotearoa  
T @ssipa\_org\_nz

Published August 2017





# Contents

CHAIRPERSON'S REPORT	5
NATIONAL MANAGER'S REPORT	6
OUR PEOPLE	7
SSPA MEMBERS	8
SUPPORT AND ENGAGEMENT	10
SPEAKING OUT	15
SUMMARY OF FINANCIAL REPORT	20
APPENDIX: MEMBERSHIP BY REGION	21



A vertical blue rectangular graphic with a white fern leaf pattern on the left side of the page.

# Chairperson's report

Staying apace with change while holding true to the mission, purpose and values of SSPA will be more important than ever.

The year 2016-17 has been a time of change to both policy and how government interacts with the social service sector. While the consequences of these changes remain to be seen, SSPA has continued its focus on representing the views and interests of members and the wider sector.

The year has also been a time of reflection and consideration of changes for SSPA at the national level. A stronger focus on communications and initiatives, such as reviewing governance structures and membership, are intended to ensure we adjust to the changing environment. I thank the national office staff, my national executive colleagues and our wider membership for their work in ensuring the critical remits are ready for this year's AGM.

Throughout the year there has been the vexed issue of identifiable client-level data (ICLD). We have been well served by our national manager, Brenda Pilott, who publicly fronted this issue successfully. Her acumen and understanding of the workings of government have been key to SSPA influencing change to mitigate the potential unintended consequences for children, young people and families.

Over the past year we have had another strong and well attended programme of best-practice workshops and a very successful and thought-provoking conference in Christchurch.

The coming year will see changes to the national executive with the departure of Raewyn Bhana, Kathleen Tuai Ta'ufo'ou

and Liz Cassidy-Nelson, as well as long-serving member and former chair Maggy Tai Rakena. This will also be my last annual report as chair. I have greatly enjoyed being part of the incredible mahi

with these people. All have made an enormous contribution but none more so than Maggy who deserves particular recognition for her 12 years of service to the national executive.

We made a strategic decision to use a limited amount of cash reserves to increase capacity and invest more in key areas of delivery. This includes the development of capability in identifying additional sources of revenue to offset the risks associated with a single source of funding. This work is still underway but it is not intended to draw further on our reserves for this purpose. We have forecast a small surplus for our next financial year in order to begin increasing our overall financial position once again.

These are challenging times and the speed of change is increasing. Staying apace with these changes while holding true to SSPA's mission and values will be more important than ever. With the strong leadership we have, and new executive members offering their skills and experience, SSPA members can be confident that our organisation remains in good hands for the future.

Shane Murdoch  
SSPA chairperson



A vertical blue rectangular graphic with a white fern leaf pattern.

# National manager's report

**This year has been one of building SSPA's influence, lifting our profile and improving engagement with members.**

The past year has been a volatile one for the community sector and for our part of the sector in particular. This has been accentuated by the start of Oranga Tamariki, the Ministry for Vulnerable Children, on 1 April 2017, together with big changes to the CYPF Act (now called the Oranga Tamariki Act 1989).

New relationships, new ways of working and new priorities all create challenges as well as opportunities.

While government has invested in establishing Oranga Tamariki, it has not increased baseline funding for contracted services though these will play a greater part in the new operating model. Many providers face significant sustainability issues after years of flatlined funding. Tackling the funding problem will be a key focus for the year ahead.

The government's social investment strategy is continuing to roll out, but for many of us our first exposure was the Ministry of Social Development's requirement to hand over individual and identifiable client data (ICLD) as a condition of funding. This prompted a strong reaction from SSPA members, professional associations and citizens.

Under the umbrella of ComVoices, we led a constructive public campaign to halt the rollout of this proposal and to demand NGO involvement in any design of a data system. This was successful but there is

still work to be done to ensure whatever data is collected fully supports client safety and professional ethics.

Above all, the work on ICLD demonstrated the value of collective action and that we can get results when we speak out, act constructively and work together.

SSPA's strong connections to members has been valuable when we have been invited to contribute to the government's consultative or developmental work, both through submissions to select committees and through our involvement in consultative bodies. Our ability to accurately reflect what is happening at the front-line is critical to our effectiveness.

Over the coming year, we will continue to build strong links with members and ensure the interests of social service providers are well represented.

I am particularly looking forward to the launch of the first SSPA journal on social service practice which is now getting underway. This will underline our commitment to quality practice and to the value of the work of NGO providers.

Brenda Pilott  
SSPA national manager





# Our people

SSPA is governed by a national executive whose members are elected for a two-term term at annual general meeting. The national manager and staff are based in Wellington.

## NATIONAL EXECUTIVE



Shane Murdoch,  
SSPA chair.  
Cholmondeley Children's  
Centre, Christchurch



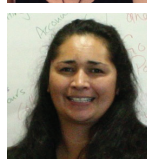
Raewyn Bhana,  
SSPA deputy chair.  
Safer Aotearoa Family  
Violence Prevention Network



Paul Hooper,  
SSPA treasurer.  
Family Works Presbyterian  
Support Services, Otago



Maggy Tai Rakena  
Immediate past chair  
START, Christchurch



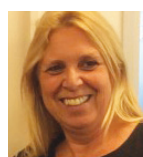
Liz Cassidy-Nelson  
One Double Five Whare  
Awhina Trust, Northland



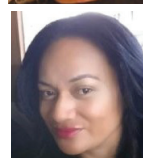
Fiona Guy  
Youth Horizons,  
Auckland



Graeme Munford  
ACROSS Te Kotahitanga O Te  
Wairua, Palmerston North



Angie Simpson  
Key Assets NZ, Auckland  
(Resigned April 2017)



Kathleen Tuai Ta'ufo'o  
Vahefonua Tonga Methodist  
Mission, Auckland

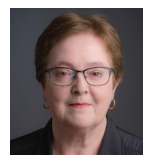


Irene Te Koeti  
Family Works Presbyterian  
Support Services, Southland



Dee-Ann Wolferstan  
Te Whare Ruruhau o Meri  
Trust, Auckland

## STAFF



Brenda Pilott,  
SSPA national manager and  
member of the national  
executive



Ayumi Sakakibara, administraton and  
events; Anne Goodman, communications





A vertical blue rectangular graphic on the left side of the page, featuring a white fern leaf pattern.

# SSPA members



There has been a focus on increasing SSPA visibility as one of the ways to increase our membership

The Strategic Plan adopted in August 2016 included membership growth as a central strategy with the goals of increasing both the numbers and diversity of members, particularly targeting Māori and Pacific Island providers and increasing numbers in the Auckland region.

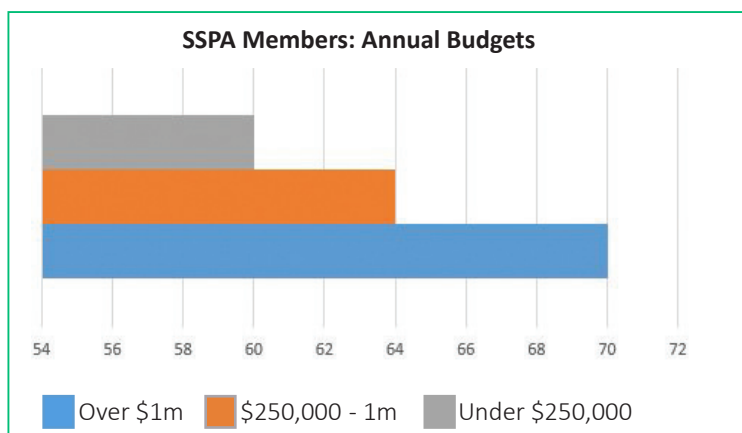
## Current membership

The SSPA database has been tidied up and is now an accurate record of financial membership. Consolidation has seen the loss of some members as organisations have merged, as well as some closures. However, 14 organisations have joined over the past year so membership has remained stable at

194. SSPA is pleased to welcome Home and Family Counselling, Waiuku Family Support Network Community Trust, Family Support South Canterbury, The Harakeke Centre, Pleroma Social Services, Gore Women's Refuge, Motueka Women's Support Link, Ngati Kahu Social and Health Services, Waitomo Papakainga Development Society, Matheson Associates Limited, Atareira, WellStop, Desert Spring Ministries Trust and Salvation Army Headquarters.

Membership renewal has been simplified and members are no longer required to fill in a membership form each year but instead notify SSPA of any changes.





### Increasing membership

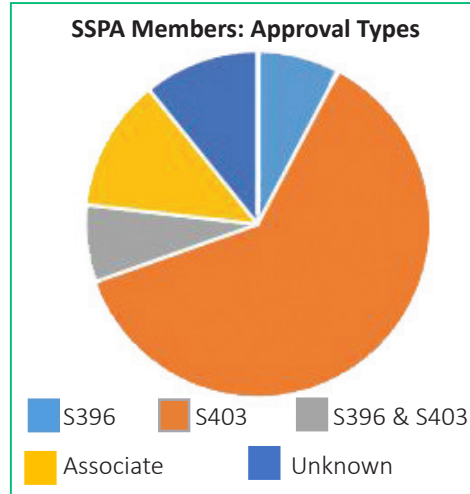
Information packs, including a welcome leaflet and a personally-addressed letter, are being sent to 600 service providers identified as potential members. This is being done over a number of weeks so as to manage the extra workload.

### Visibility

There has been a deliberate focus on increasing SSPA visibility as part of the membership growth strategy.

MSD's policy on client data provided an opportunity to raise SSPA's profile and demonstrate the benefits of a representative body that has influence and speaks out.

Visibility is also being raised through sustained social media activity and visits by the national manager to members and potential members in the regions, and



by national executive members in their regions.

### Auckland initiative

A growth project was led by executive member Raewyn Bhana in Auckland to build membership, particularly amongst Māori and Pacific Island providers.

### Proposed membership criteria

National executive has proposed changes to the membership and governance rules designed to broaden the size and scope of SSPA membership and to ensure Māori representation on the board. These changes will be subject to a vote at the annual general meeting 2017.

# Support & engagement



A central goal of the strategic plan is that members see added value in the information and resources available from SSPA

The goal of adding value to membership through our information and resources is being pursued through practice-based professional development, workshops to build organisational capability, and a focus on the quality, regularity and presentation of information available to members.

One of the issues SSPA has struggled with is how to maximise the value of membership for members in rural areas where there are not enough potential participants to make workshops feasible. Online technology is being explored to reach out-of-the-way members. Webinars are one option as

an effective way to present and deliver information, although they are less effective as an interactive medium.

## ANNUAL CONFERENCE

### SSPA Conference 2016

The theme for Conference 2016 was *Taking Charge of Change: Transformation through Innovation*. It was designed so members could find out more about the changes facing social service providers, and how best to respond, innovatively and confidently, to the challenges.



### Child-centred and trauma-informed practice

SSPA commissioned Otago University social work associate professor Dr Nicola Atwool to help providers align their practice with the renewed government focus of putting children at the centre of service responses. The workshops have been held in South Auckland (78 participants); West Auckland (21 participants); Invercargill (79 participants); Timaru (54 participants);

Participants welcomed the opportunity to hear from social development minister Anne Tolley and to put questions to her and to government officials about the planned changes.

The conference was attended by 168 participants from 91 organisations. It offered a packed programme with five key speakers, twelve workshops and six quick-fire talks.

While participants told us they would have liked more interactivity and time for questions, the evaluations attested to the success of the conference, with a satisfactory or very satisfactory rating of 100 percent.

SSPA thanks the Ministry of Social Development for its funding support and the conference sponsors Careerforce, Ebborn Law, and Key Assets.

Hamilton (125 participants); and Dunedin (100 participants). Evaluations indicate a very high degree of satisfaction and confidence that what has been learned can be put into practice.

### Understanding outcomes

SSPA commissioned Garth Nowland-Foreman to run a half-day workshop in Wellington to develop a greater understanding of outcomes-based practice. This followed on from his presentation at the conference but with a stronger focus on its practical implementation. SSPA also worked with Community Investment Upper South and Superu in trialling a new approach for providers on understanding outcomes as the basis of their planning, delivery and evaluation of services. Superu has evaluated the workshops that were held in Westport, Nelson and Blenheim.

## WORKSHOPS

SSPA's professional development programme over the past year has had a strong focus on assisting providers to understand and adapt to changes signalled for Oranga Tamariki, as well as supporting the objectives of the Community Investment Strategy.

### Governance training

SSPA has promoted the online governance training courses run by Governance Essentials and Xperts. It is a quality course and offers a substantial discount for SSPA members but the response has been disappointing. More effort is going into identifying and targeting board members as



they are the group for whom the course has been designed.

### Successful tendering

SSPA commissioned a workshop on tendering as this had been signalled as one of the contracting options ahead. The aim was to provide practical guidance on how to respond to a government RFP (request for proposal). The workshop, held in Wellington, was well received; SSPA is looking at ways to hold similar workshops in other parts of the country.

### Webinar on client data

SSPA, in partnership with Community Research and NZCCSS, co-presented a 60-minute webinar on individual client-level data and its potential effect on service providers. More than 400 people registered to watch it, and many engaged in further discussion in a Facebook group.

Dr Nicola Atwool, associate professor at Otago University, was commissioned by SSPA to



present a series of workshops on child-centred and trauma-informed practice. They proved to be an outstanding success, attracting 450 participants, including staff from Oranga Tamariki, and received highly positive evaluations.

The workshops have been run in six centres to date, and more are planned.

SSPA is grateful to Nicola for her enormous contribution to building capability across the sector and assisting providers to successfully adapt to change.



## INFORMATION

National executive called for a review of SSPA communications to ensure they meet the goal of adding value to membership through information and resources, and to improve engagement with members. As part of the review, it was agreed on the need to refresh the SSPA logo and website.

Members' views on communications were sought through a survey in November 2016. This attracted a 25 percent response rate. It found that:

- Members want to be kept up to date with news and information, but they don't have much time for reading.
- SSPA information tends not to be widely circulated within organisations.
- Members don't have time to browse the website but use it for current information and to register for SSPA workshops and conference

As a result of the review, the following has been achieved.

**SSPA Quick Update:** This is a weekly email newsletter providing succinct items of relevant news and information, with links for those who want to find out more. This has attracted positive feedback and has increased engagement with members.

**SSPA Alert:** This is an as-required email newsletter to alert members to a specific issue, and provide some detail about what it is and SSPA's response.



**Distribution:** Some effort has been made to extend the reach of newsletters within member organisations and this will continue.

**New logo:** SSPA contracted a design school graduate to refresh the SSPA logo. The result is a professional and more modern take on the previous logo.

**Website refreshment:** The website has been refreshed with a new look, a more navigable structure, and an improved events booking system. The option of a member-only area will be considered in the next financial year.

**Social media:** SSPA is engaging with members through Facebook and Twitter.

### Professional journal

SSPA is to launch a professional journal focused on social service practice. An editorial board of respected practitioners and academics has been formed and work is beginning on the first issue. The twice-yearly journal will fill an information gap and add further value to SSPA membership.

## REGIONAL MEETINGS

### Manawatu

The Manawatu SSPA regional group has met in Palmerston North every two months over the last year. Its members, which include various organisations working across the sector, meet to discuss local issues impacting on service delivery and other concerns at a broader level affecting organisations. Those concerns in the last year have included changes to Child, Youth and Family, proposed changes to the CYPF Act and, most recently, potential contracting changes and the proposal by MSD for organisations to provide data identifying clients in their reporting.

The meetings have also been an opportunity to invite speakers to discuss new services and programmes in the area, support collaboration and promote best practice. The group has particularly appreciated weekly updates from the SSPA national office and the opportunity to have input into their submission work.

### Canterbury

Canterbury SSPA has a long history of local networking, with monthly meetings and occasional best-practice seminars. Local member organisations generously host these meetings which provide opportunities to share ideas, innovations, problems and hear from invited speakers. This year, speakers included Child Youth and Family, Problem Gambling Foundation, NZ Interpreting Services, City Mission, Aviva and the Loft, Cholmondeley Children's Centre, Pillars, Rata Foundation, Right Service Right Time, He Waka Tapu, Stop, Te Puawaitanga, Petersgate and Pathways, and the Earthquake Psychosocial Recovery committee. A best-practice seminar on cultural competency met with very positive feedback and a large attendance.

Canterbury SSPA members created the Right Service Right Time initiative many years ago and continue to be actively involved in all levels of its governance and management. RSRT has played a strong role in the local children's team.



**Our vision**  
A vibrant and strong social service sector

**Our mission**  
SSPA is a hub of expertise that supports the capability and performance of social service providers

### STRATEGIC PLAN 2017 - 2010

**KEY THEMES**

**Sustainability**

SSPA has a diverse and sustainable funding base  
SSPA diversifies its core functions and secures funding streams

**Growth**

Greater proportion of sector providers are SSPA members  
Greater diversity of membership; growing Māori and Pasefika membership

**Building sector capability**

Extend the range of training and development  
Keep members up to date with timely and relevant information

**Our values**

Te Tiriti o Waitangi

Social justice

Best practice

Accountability, transparency

Partnership & consultation



# Speaking out



The past year has seen the SSPA raise our profile through networks, media, and engagement with government.

## INFLUENCE

SSPA seeks to engage with all those involved in the field of social services, whether making or influencing decisions, developing policy, researching or teaching best practice, or with a professional interest. The purpose is to extend SSPA's influence, share information and ideas, and ensure members' concerns, as well as the value of their work, are kept to the forefront.

### Government and agencies

SSPA has met on several occasions with social development minister Anne Tolley, community and voluntary sector minister Alfred Ngaro and, since taking up her new responsibility for social investment,

minister Amy Adams. It is pleasing to report that even where there are differences of opinion, these meetings are invariably constructive.

SSPA has also met and held discussions with representatives of the main political parties, including Carmel Sepuloni and Poto Williams (Labour); Jan Logie (Greens); Ria Bond (NZ First); and Peter Dunne (United Future).

Gráinne Moss, CEO of Oranga Tamariki, attended a national executive meeting this year and met with the SSPA national manager soon after taking up her position as head of the new ministry. SSPA maintains relationships with government agencies such as MSD, the Office of the Children's



Commissioner, Superu, Social Investment Unit and Social Work Registration Board. Useful meetings have been held with the State Services Commissioner and the Privacy Commissioner.

SSPA meets regularly with Careerforce on education and training opportunities for people working in social services. We are committed to promoting Careerforce apprenticeships for the social service sector as these enhance provider capability and open up career pathways for employees.

### NGO sector

SSPA's relationships with the wider NGO sector have been strengthened over the past year, due in part to Brenda Pilott's selection as chair of ComVoices. Combining

our voice with others in the sector, and taking a lead role in the media and in representations to government, has enhanced SSPA's influence and achieved results for members, most notably with respect to the client data issue.

This year's election is an opportunity to raise issues with political parties and their candidates. SSPA, through its membership of Comvoices, has contributed to developing information for political parties on the key issues for community-based services.

### Academic and research

SSPA has developed some valuable contacts with academics and researchers, including university departments of social work,

## CLIENTS' PERSONAL DATA – THE STORY SO FAR

### SEPTEMBER 2016

MSD announces that service providers must provide clients' personal details as a condition of funding. It's known as ICLD – identifiable client-level data.

Social workers in schools and budgeting services are the first to have ICLD written into their contracts.

### DECEMBER 2016

ComVoices issues a paper on the problems with ICLD, and suggests alternative approaches.

### MARCH 2017

Brenda Pilott, SSPA, is interviewed on radio and television.

Media and professional bodies express disquiet with the policy.

Wellington NGOs rally at parliament.

Government says it will defer requirement for sexual violence

services to provide client data.

### APRIL 2017

The Privacy Commissioner concludes the ICLD is inconsistent with the Privacy Act.

MSD has a security breach of client data.

Brenda Pilott and Trevor McGlinchey lead a ComVoices delegation to meet with government ministers and suggest an alternative approach.

### MAY 2017

Government halts ICLD until NGO concerns are worked through.

Government announces the Social Investment Unit will lead the client data programme; NGOs to be represented on a client data working party.

### AUGUST 2017

SSPA appointed to Social Investment Agency working group on social sector data.

Victoria University School of Government, and the Family Violence Clearing House. SSPA is pleased to assist Jo Cribb's research on NGO governance and how boards are dealing with the challenges they face. National manager Brenda Pilott was invited to participate in a series of Victoria University roundtables on social investment, which provided a useful overview of current thinking and direction.

We hope the planned SSPA journal will be an important vehicle for sharing the knowledge and findings of academics and researchers with a much wider audience.

### Representation

Over the past year, SSPA has been represented on the following consultative bodies:

- Minister of Social Development's NGO Advisory Group
- Charities Services – Sector User Group
- Social Work Registration Board – Social Work Alliance
- MBIE Social Services Procurement Team

SSPA was consulted by Accreditrion which is redesigning the MSD, Oranga Tamariki and Ministry of Justice approval process.

## SUBMISSIONS

Submissions and papers presented by Social Service Providers Aotearoa, from 1 July 2016.

### Children, Young Persons and their Families (Oranga Tamariki) Bill

Shane Murdoch and Brenda Pilott presented SSPA's submission to the social services select committee. They noted that while the Bill has many positive aspects, members have some concerns that need to be addressed, in particular the downgrading of the place of whanau, hapu and iwi in decisions about their children. SSPA called for a stronger focus on supporting families so children need not be taken into care; and where a child is taken into care, that kin care is reinforced. There is, in addition, widespread concern that the significant change process will not be adequately resourced to achieve the desired goals.

*March 2017*

### Individual client-level data (ICLD): proposal to government

As chair of ComVoices, SSPA national manager Brenda Pilott led a delegation that met with government ministers to discuss the problems with ICLD, and to propose an



alternative approach that would support the social investment programme.

*March 2017*

### **Individual Client Level Data (ICLD): Issues Paper**

SSPA contributed to a ComVoices paper summarising the key issues for the community sector of ICLD as the basis for engagement with MSD. *December 2016*

### **Programme Recognition Standards**

SSPA provided feedback to the Social Work Registration Board on the draft programme recognition standards. *October 2016*

### **Family Violence Risk Assessment and Management**

SSPA provided feedback to the Ministry of Justice on the family violence risk assessment and management discussion document. *September 2016*

### **Children, Young Persons and their Families (Advocacy, Workforce, and Age Settings) Amendment Bill**

Maggy Tai Rakena presented SSPA's submission which strongly supported increasing the age limit for care and protection as well as, giving children and young people a voice in decisions that affect them. SSPA also agreed with the need for an independent advocacy service for vulnerable children and young people. Concerns centred on the resourcing and implementation of the new legislation, and the transfer of all statutory duties to the chief executive around delegation. *July 2016*

Supplementary submission: At the request of the social services select committee, SSPA presented a supplementary submission on the principles that should underpin the delegation of child protection functions. *Aug 2016*

### **Inquiry into the Operation of the Social Workers Registration Act**

Executive member Dee-Ann Wolferstan and national manager Brenda Pilott presented SSPA's submission to the select committee. It supported mandatory registration in principle but pointed to the need to retain Section 13 registration and reduce the cost of registration. *July 2016*

Supplementary submission: At the request of the select committee, SSPA provided information on the cost of mandatory registration for NGOs. *October 2016*

## **MEDIA**

### **Client data**

Radio NZ: Brenda Pilott interviewed on the Insight programme exploring the issues around the client data policy. *25 June 2017*

### **Mandatory registration**

SSPA told the media of practical matters, including cost, that need to be addressed



to ensure social worker registration is viable for the not-for-profit sector. *21 June 2017*

### **Government halts collection of individual client data**

Brenda Pilott, on behalf of SSPA and ComVoices, welcomes the government's decision to call a halt to the gathering and sharing of client data until the concerns of the not-for-profit sector have been worked through. *24 May 2017*



### **Alfred Ngaro's warnings**

TV One News: Brenda Pilott responded to community and voluntary sector minister Alfred Ngaro's warnings against criticism of government housing policies. *May 2017*

### **New ministry needs to be resourced**

Shane Murdoch and Brenda Pilott presented SSPA's submission on the Children, Young Persons and their Families (Oranga Tamariki) Bill, and pointed to the importance of adequate resources for the new ministry. *21 March 2017*



### **Rally opposing policy on client data**

TV One: Brenda Pilott was interviewed by Andrea Vance at the rally at parliament opposing the policy on sharing client data. *16 March 2017*

### **Investigation of data-for-funding proposal**

Brenda Pilott, chair of ComVoices, was interviewed by RNZ News (*3 March 2017*) and Dominion Post (*2 March 2017*) about the Privacy Commissioner's investigation of the data-for-funding policy.

### **Demand for client data from NGOs**

Radio NZ: Brenda Pilott, chair of ComVoices, was interviewed by Kathryn Ryan on the government demand for client data in exchange for funding. *2 March 2017*

### **Problems with client data policy**

Breakfast TV: Brenda Pilott was interviewed by Hilary Barry on the problems with the government's data-for-funding policy. *March 2017*

### **Cancellation of NGO study awards**

SSPA was critical of the decision to cancel the study awards that assisted NGO employees to undertake part-time study for a degree-level qualification in social work. *29 July 2016*

# Summary of financial report as at 30 June 2017

## STATEMENT OF FINANCIAL POSITION

	2017	2016
<b>ASSETS</b>		
<b>Current Assets</b>		
Bank accounts and cash	17,165	14,127
Debtors and prepayments	210,301	14,060
Other Current Assets	86,903	133,103
<b>Total Current Assets</b>	<b>314,369</b>	<b>161,290</b>
<b>Non-Current Assets</b>		
Property, plant and equipment	6,197	626
<b>Total Non-Current Assets</b>	<b>6,197</b>	<b>626</b>
<b>Total Assets</b>	<b>320,566</b>	<b>161,916</b>
<b>LIABILITIES</b>		
<b>Current liabilities</b>		
Creditors and accrued expenses	38,174	6,846
Other current liabilities	206,897	24,287
<b>Total Current Liabilities</b>	<b>245,071</b>	<b>31,133</b>
<b>Total Liabilities</b>	<b>245,071</b>	<b>31,133</b>
<b>Total Assets less Total Liabilities (Net Assets)</b>	<b>75,494</b>	<b>130,783</b>
<b>ACCUMULATED FUNDS</b>		
Accumulated surpluses (or deficits)	75,494	130,783
<b>Total Accumulated Funds</b>	<b>75,494</b>	<b>130,783</b>

Footnote: The financial statement summary has been extracted from the full audited report of Social Service Providers Aotearoa Inc for the year ended 30 June 2017, authorised for issue in August 2017 by Crombie & Associates. The full financial statements are available to members at the AGM and at [www.sspa.org.nz](http://www.sspa.org.nz).



# Appendix: Membership by region

## AUCKLAND

Anglican Trust for Women & Children  
 Aotea Family Support Group  
 Auckland Kindergarten Association  
 Auckland Sexual Abuse Help  
 Barnardos New Zealand (Auckland)  
 Big Buddy Mentoring Trust  
 Community Legal Services South Trust  
 (Otago Community Law Centre)  
 Counselling Services Centre  
 Dayspring Trust  
 Family Start Manukau  
 Fonua Ola Network Trust  
 Friendship House  
 Home and Family Counselling  
 IOSIS Limited  
 Key Assets Foundation  
 Lifewise  
 Nga Tangata Microfinance Trust  
 North Shore Women's centre  
 Papatoetoe Adolescent Christian Trust Inc  
 Presbyterian Support Family Works  
 Northern  
 Safer Aotearoa Family Violence Prevention  
 Network  
 Salvation Army Manukau Community  
 Ministries  
 STRIVE Community Trust  
 Te Iwi O Ngati Kahu Trust  
 Te Whanau Tahī Ltd  
 Te Whare Ruru hau o Meri Trust  
 The Dingwall Trust



The Kauri Trust  
 The Parenting Place  
 Vahefonua Tonga Methodist Mission  
 Charitable Trust  
 VisionWest Community Trust  
 Waiuku Family Support Network  
 Community Trust  
 Waves Trust  
 Youth Horizons Trust  
 Youthlink Family Trust

## BAY OF PLENTY

Bay Of Plenty Therapy Foundation  
 Coromandel Independent Living Trust  
 Homes of Hope Charitable Trust

## CANTERBURY / OTAUTAHU

Anglican Care South Canterbury  
 Autism NZ Canterbury/West Coast  
 Aviva Family Violence Services  
 Barnardos Christchurch  
 Belfast Community Network Inc  
 Canterbury Men's Centre  
 Catholic Social Services Christchurch  
 Centrecare Counselling Waimate  
 Child Health Services Canterbury District Health Board  
 Cholmondeley Children's Centre Inc  
 Christchurch Budget Service Inc  
 Christchurch City Mission  
 Christchurch Methodist Mission  
 Christchurch Resettlement Services  
 Compensation Advisory Services Ltd (LifeLinks)  
 Early Start Project Ltd  
 Family Help Trust  
 Family Support South Canterbury  
 He Waka Tapu  
 Home & Family Society Christchurch  
 Kingdom Resources Ltd  
 Male Survivors of Sexual Abuse Trust  
 OSCAR Network  
 Pathways Health  
 Pegasus Health Charitable Ltd  
 Petersgate Counselling Centre  
 Pillars Inc  
 Presbyterian Support South Canterbury/Family Works  
 Presbyterian Support USI  
 Problem Gambling Foundation  
 Purapura Whetu Trust  
 St John God of Hauora Trust (Community, Youth & Child Services)

Stand for Children Services  
 START  
 Stop Trust  
 Stopping Violence Services (Christchurch) Incorporated  
 Te Ora Hou Otautahi Inc  
 Te Puawaitanga Ki Otautahi Trust  
 Te Puna Oranga Inc  
 The Champion Centre  
 The Harakeke Centre  
 Toughlove Upper South Island  
 Wellbeing North Canterbury Community Trust

## GISBORNE/TAIRAWHITI

Social Services Tairāwhiti, Presbyterian Support East Coast  
 Supergrans Aotearoa Inc

## HAWKE'S BAY

Anglican Care Waiapu  
 Birthright Hawke's Bay Child and Family Care  
 Dove Hawkes Bay  
 Family Works Hawkes Bay Presbyterian Support  
 Napier Family Centre  
 Pleroma Social Services  
 Te Ikaroa Rangatahi

## LAKES

Mana Social Services Trust  
 Te Korowai Roopu Tautoko Inc

## MID CENTRAL / MANAWATU

ACROSS Te Kotahitanga O Te Wairua  
 Living Well Counselling Centre



Manline  
 Methodist Social Services  
 Parentline Manawatu Inc  
 SuperGrans Manawatu Charitable Trust  
 Te Aroha Noa Community Services  
 Te Manawa Services

## NELSON / BLENHEIM

Golden Bay Community Workers Inc  
 Motueka Women's Support Link  
 Nelson Womens & Childrens Refuge - Nga  
 Wahine Tamariki Pununga o Whakatu  
 SVS Living Safe (Stopping Violence Services  
 Nelson)

## NORTHLAND

Aupouri Youth Trust  
 Homebuilders Family Services North Rodney  
 Jigsaw North- CAPS Northland  
 Mid North Family Support  
 Ngati Hine Health Trust  
 Ngati Kahu Social and Health Services  
 One Double Five Whare Roopu Community  
 House Trust  
 Otamatea Community Services  
 (Homebuilders)  
 Positive Living Promotions Inc  
 Stand Children's Services, Tu Maia Whanau,  
 Northern  
 Whangarei Rape Crisis Group

## OTAGO

Anglican Family Care Centre  
 Catholic Social Services Dunedin  
 Central Otago REAP  
 Jigsaw Central Lakes (merged with  
 Queenstown Lakes Family Centre)  
 Otago Youth Wellness Trust

Presbyterian Support Otago  
 The Mount Cargill Trust

## SOUTHLAND

Able Charitable Trust Southern Family  
 Support  
 Awarua Social and Health Services  
 Barnardos Southland  
 Family Works  
 Nga Kete Matauranga Pounamu Charitable  
 Trust  
 Number 10 Southland Youth One Stop Shop  
 Trust  
 Pact Youth South  
 Pregnancy Help Invercargill  
 Riverton Community Charitable Trust  
 Southland Help (RAASC)  
 Southland Mature Employment Charitable  
 Trust  
 Te Whare Hou – Invercargill Women's  
 Refuge  
 Tuatapere Community Workers Support  
 Trust

## TARANAKI

Taranaki Family Works  
 Taranaki Young Peoples Trust

## WAIKATO

CAPS Hauraki Inc  
 Catholic Family Support Services  
 Community Living  
 Desert Spring Ministries Trust  
 Institute for Child Protection Studies-Child  
 Matters  
 Otorohanga Household Budgeting Service  
 Waitomo Papakainga Development Society

## WELLINGTON

Atareira  
Birthright Hutt Valley  
Birthright NZ  
Birthright Wellington Inc  
Careerforce  
Catholic Social Services  
Challenge 2000  
Family Works New Zealand  
Focus Trust T/A Workmates Supported  
Employment  
Fostering Kids  
Hutt Rape Counselling Network  
Kapiti Women's Health Collective  
Lower Hutt Women's Centre  
Masterton Family Education and Support  
Centre (previously Masterton Christian  
Child Care)  
Matheson Associates/Research Centre  
for Better Outcomes from Fostering and  
Residential Care  
Naku Enei Tamariki

Pregnancy Help Inc  
Presbyterian Support Central (Family Works)  
Salvation Army (Headquarters)  
Skylight Trust  
Stand Children's Services Tu Maia Whanau  
National Office  
Wairarapa Community Counselling Centre  
Wellington Sexual Abuse Help Foundation  
WellStop  
Wesley Community Action  
Whanau Manaaki Kindergartens

## WEST COAST

Homebuilders West Coast Trust

## WHANGANUI

Family Works Whanganui  
Jigsaw Whanganui  
Life To the Max Trust  
Te Ora Hou Whanganui  
YMCA Central